



**Specifications**

Rating: 5-24VADC/1A Pulse Mode.  
Operating Life: 50 Million cycles min.  
Contact Resistance: 1Ω MAX.  
Operating Temperature: -20°C to 65°C.

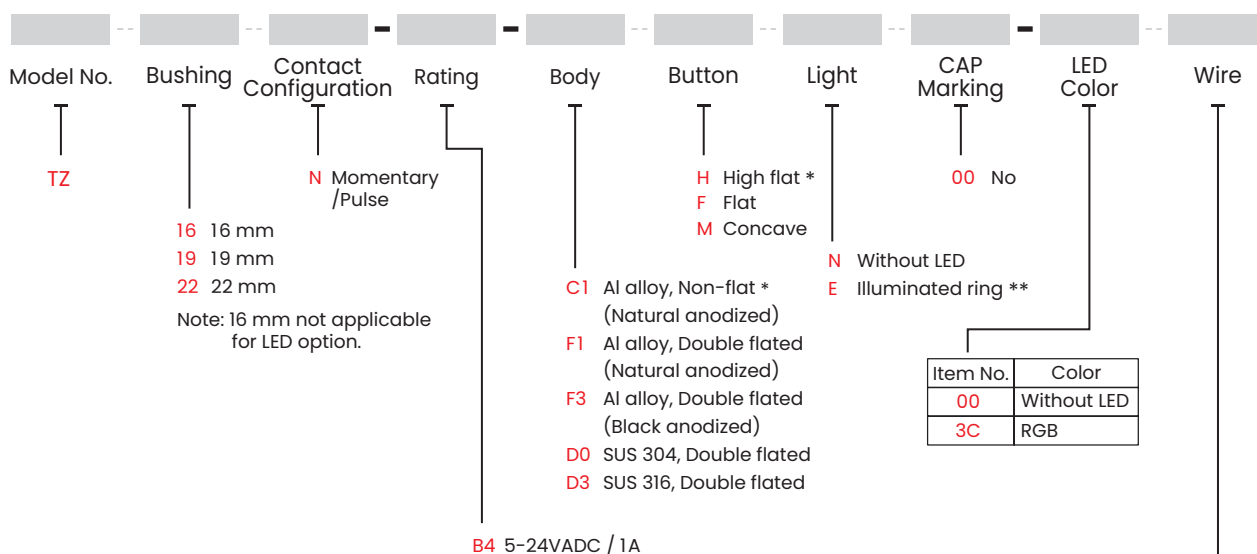
Ingree Protection: IP68 (In house test)



**Materials**

Bushing: Aluminum Alloy / Stainless Steel.  
CAP: PC ; Aluminum alloy / Stainless steel.  
Sealing: Silicone, Epoxy.  
O-Ring: Silicone.  
Hex Nut: Nickel plated brass.  
Wire: Standard wire 26 AWG.

**HOW TO ORDER**



Available with TZ16 model only  
**D301** 150 mm+2.54 1x2 Connector (Std.)  
**D302** 300 mm+2.54 1x2 Connector

Available with TZ19 / TZ22 model only  
**D101** 150 mm+2.54 1x6 Connector (Std.)  
**D102** 300 mm+2.54 1x6 Connector

Note: Please consult sales for additional wire options.

**EXAMPLE:**

TZ16N-B4-□ HN00-00D301  
 Body options

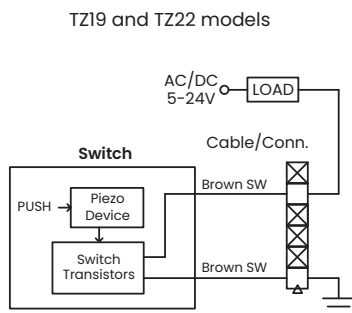
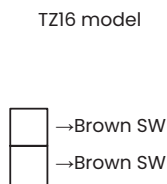
TZ19N-B4-□ FE00-3CD101  
 Body options

\* For model type TZ16 only.  
 \*\* For model types TZ19 and TZ22 only.



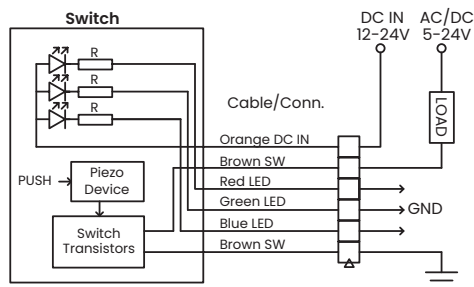
▼ **CIRCUIT**

**00** Without LED application diagram



**3C** RGB LED application diagram

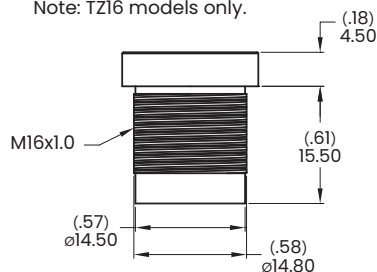
Note: Available with TZ19 and TZ22 models only.



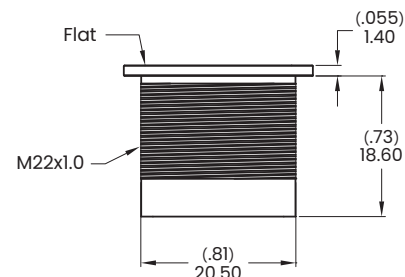
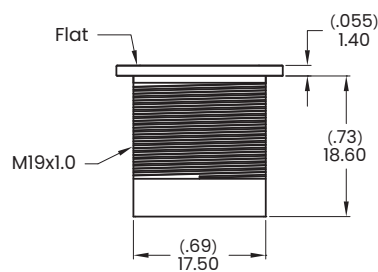
▼ **BUTTON OPTIONS**

**H** High flat, No LED

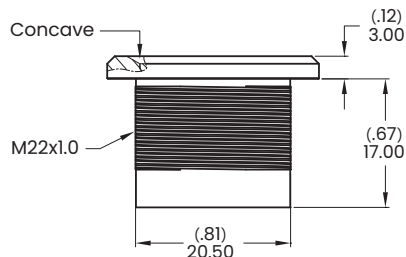
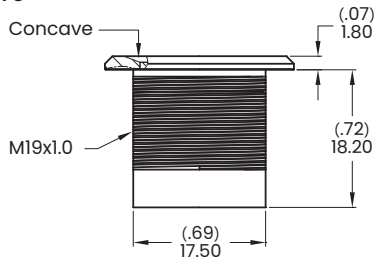
Note: TZ16 models only.



**F** Flat

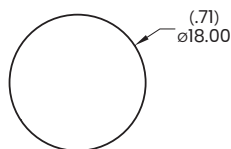


**M** Concave

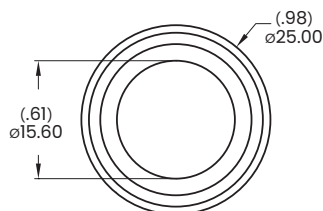


▼ **LIGHT OPTIONS**

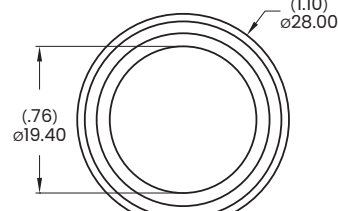
**N** Without LED



TZ16

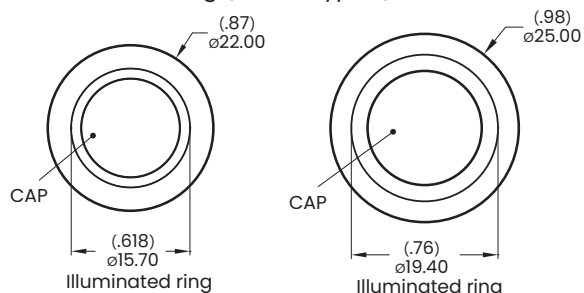


TZ19



TZ22

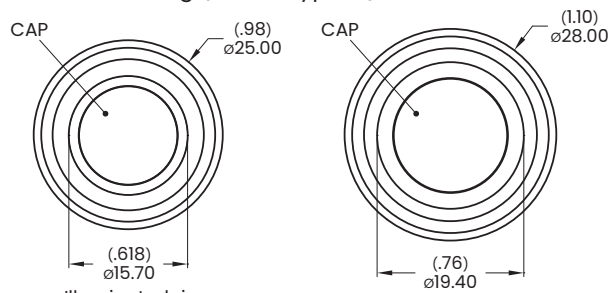
**E** Illuminated ring (Button type F)



TZ19

TZ22

**E** Illuminated ring (Button type M)

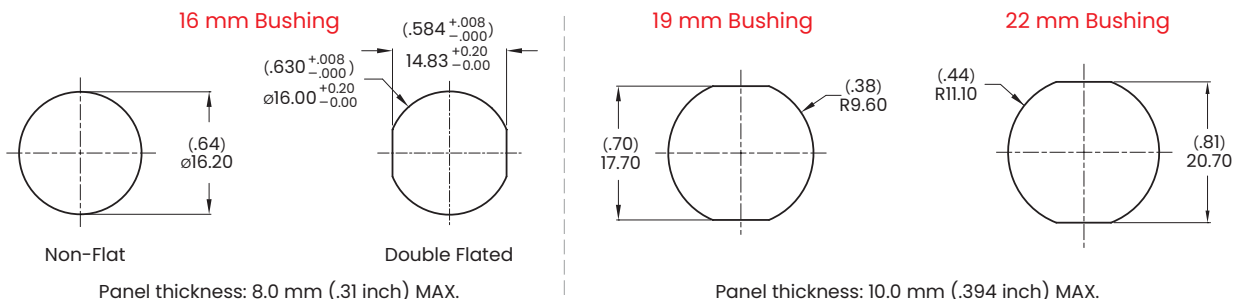


TZ19

TZ22



▼ **PANEL MOUNTING**

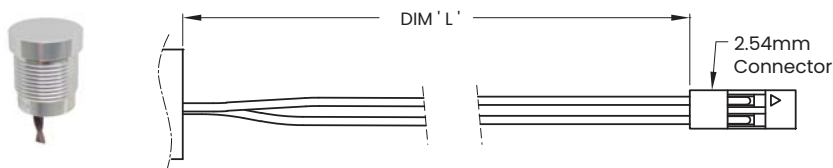


▼ **WIRE OPTIONS**

**D30X** Wire leads, 26 AWG  
Note: Available with TZ16 Model only.

Wires:	Code	DIM 'L'
	D301	150 mm
	D302	300 mm

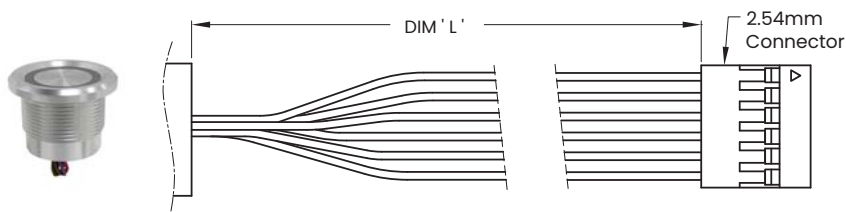
Note: No Illumination: Brown Wires.



**D10X** Wire leads, 26 AWG  
Note: Available with TZ19 and TZ22 Models only.

Wires:	Code	DIM 'L'
	D101	150 mm
	D102	300 mm

Orange wire - DC IN  
Brown wire - SW (Q'TY 2)  
Red wire - Red LED  
Green wire - Green LED  
Blue wire - Blue LED

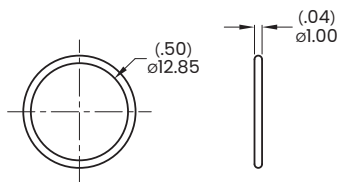


▼ **HARDWARE**

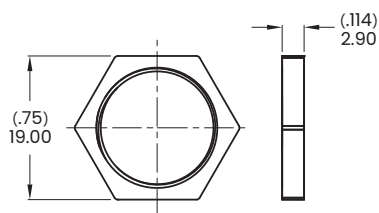
\* Standard hardware : 1 Nut, 1 O-Ring  
\* For further information please consult sales representative.

Available with bushing 16 only

**O-Ring**  
Model name. FCP-MP602

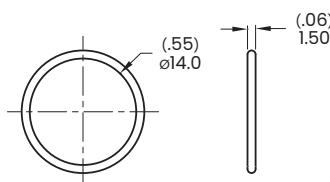


**Hex Nut**  
Model name. MNU-PY01

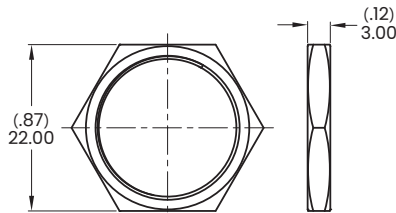


Available with bushing 19 only

**O-Ring**  
Model name. FCP-PY02

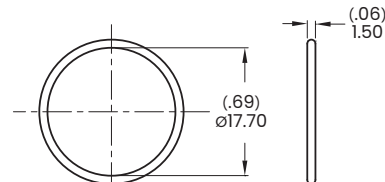


**Hex Nut**  
Model name. MNU-MPB01

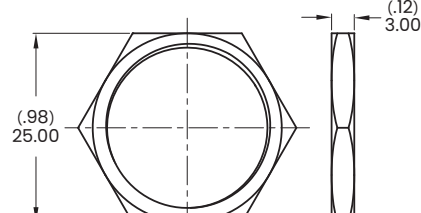


Available with bushing 22 only

**O-Ring**  
Model name. FCP-MPB07



**Hex Nut**  
Model name. MNU-MPB02





**Specifications**

Rating: 5-24VADC / 1A Lock Mode.  
 Power: 5-24V DC.  
 Indicator: 5-24V DC.  
 Operating Life: 50 Million cycles min.  
 Contact Resistance: 1 Ω MAX.  
 Operating Temperature: -20°C to 65°C.

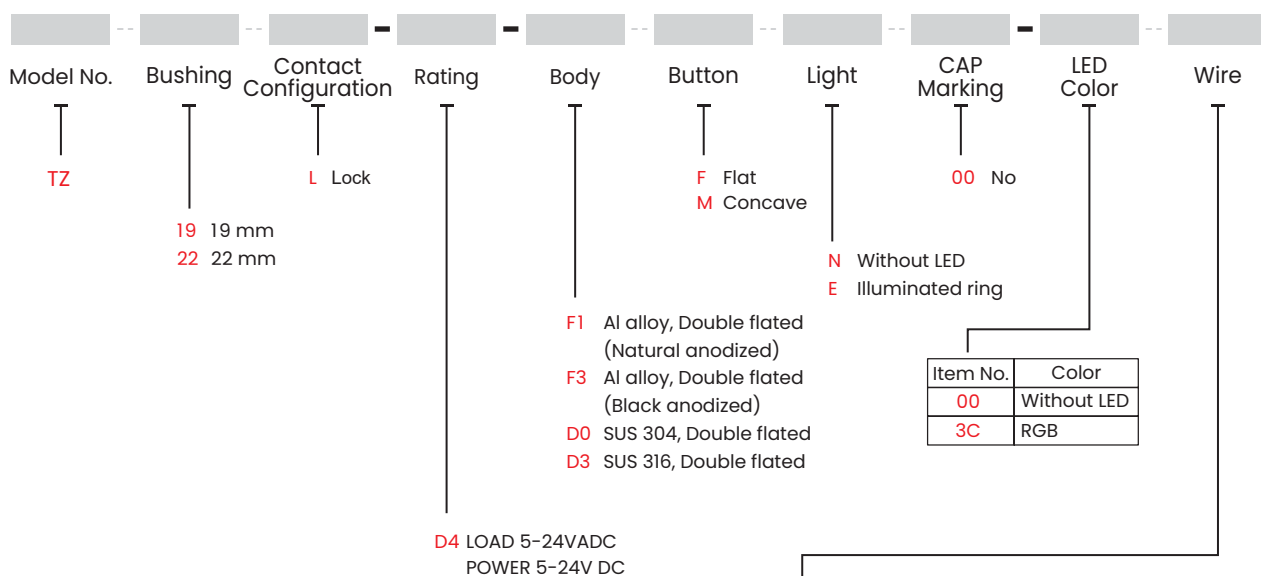
Ingree Protection: IP68 (In house test)



**Materials**

Bushing: Aluminum alloy / Stainless steel.  
 CAP: PC ; Aluminum alloy / Stainless steel.  
 Sealing: Silicone, Epoxy.  
 O-Ring: Silicone.  
 Hex Nut: Nickel plated brass.  
 Wire: Standard wire 26 AWG.

**HOW TO ORDER**



**D101** 26AWG 150 mm+2.54 1x6 Connector are only available without LED.

**With LED**

**DB01** 26AWG 150 mm+2.54 2x4 Connector for model type TZ19L only.

**DA01** 26AWG 150mm+2.54 1x8 Connector for model type TZ22L only.

Note: Please consult sales for additional wire options.

EXAMPLE:

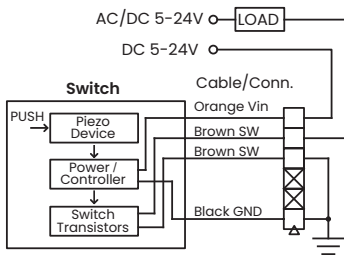
TZ19L-D4-□FN00-00D101  
 Body options

TZ19L-D4-□FE00-3CDB01  
 Body options



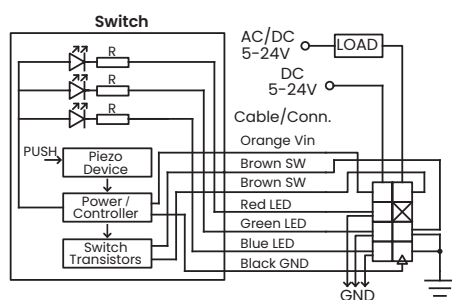
▼ **CIRCUIT**

**00** Without LED application diagram

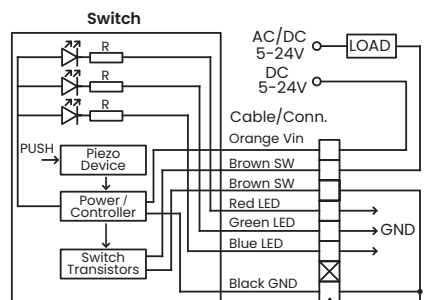


**3C** RGB LED application diagram

TZ19L model



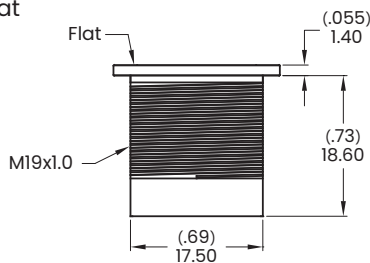
TZ22L model



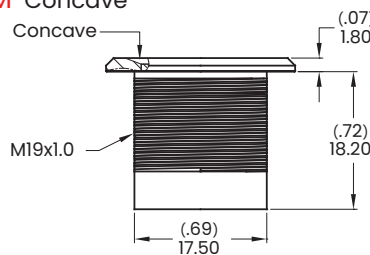
TZ (Lock)  
Piezo Switches

▼ **BUTTON OPTIONS AND PANEL MOUNTING**

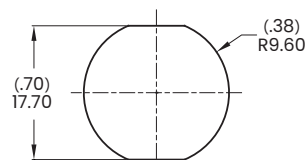
**F** Flat



**M** Concave

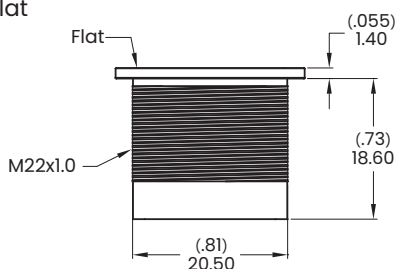


19 mm Bushing

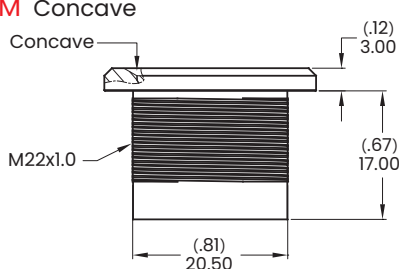


Panel thickness:  
10.0 mm (.394 inch) Max.

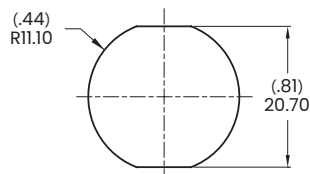
**F** Flat



**M** Concave



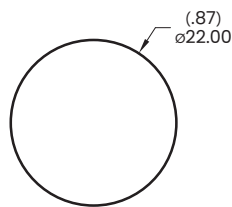
22 mm Bushing



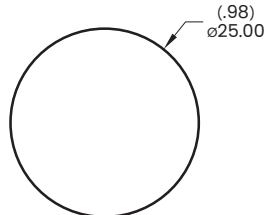
Panel thickness:  
10.0 mm (.394 inch) Max.

▼ **LIGHT OPTIONS**

**N** Without LED (Button type F)

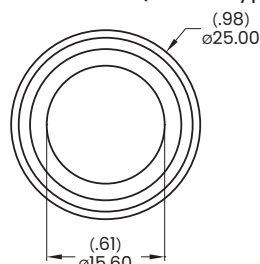


TZ19L

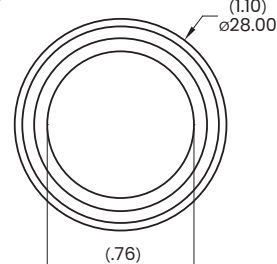


TZ22L

**N** Without LED (Button type M)

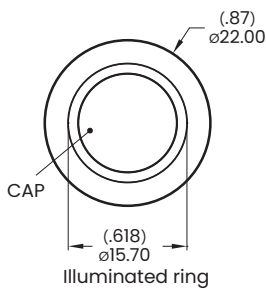


TZ19L

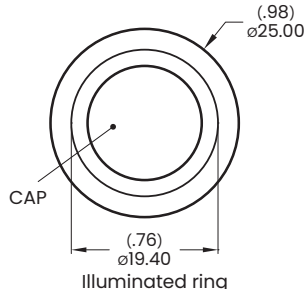


TZ22L

**E** Illuminated ring (Button type F)

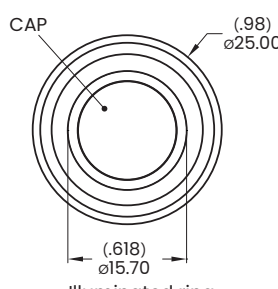


TZ19L

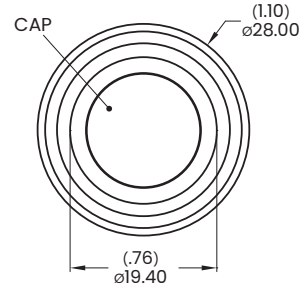


TZ22L

**E** Illuminated ring (Button type M)



TZ19L



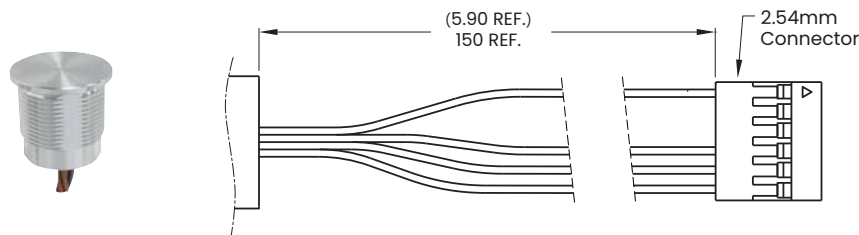
TZ22L



▼ **WIRE OPTIONS**

**D101** Wire leads, 26 AWG (Without LED)

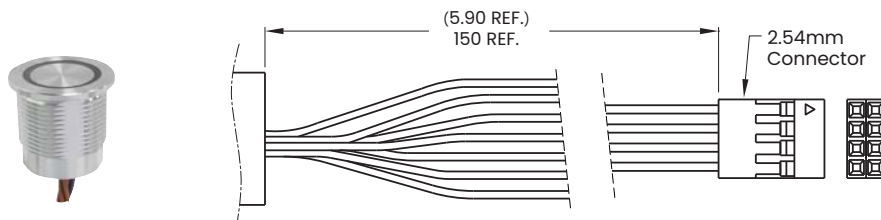
TZ (Lock)  
Piezo Switches



Wires:  
Orange wire - Vin  
Brown wire - SW (Q'TY 2)  
Black wire - GND

**DB01** Wire leads, 26 AWG

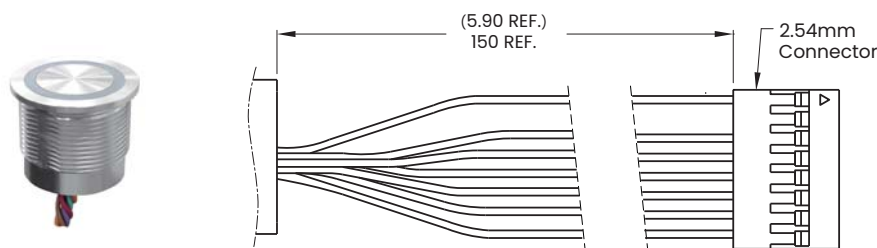
Note: Available with TZ19L Model only.



Wires:  
Orange wire - Vin  
Brown wire - SW (Q'TY 2)  
Red wire - Red LED  
Green wire - Green LED  
Blue wire - Blue LED  
Black wire - GND

**DA01** Wire leads, 26 AWG

Note: Available with TZ22L Model only.



Wires:  
Orange wire - Vin  
Brown wire - SW (Q'TY 2)  
Red wire - Red LED  
Green wire - Green LED  
Blue wire - Blue LED  
Black wire - GND

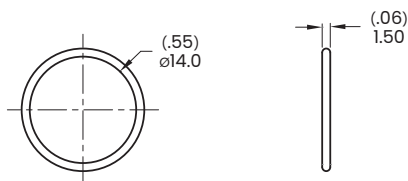
▼ **HARDWARE**

- \* Standard hardware : 1 Nut, 1 O-Ring
- \* For further information please consult sales representative.

Available with bushing 19 only

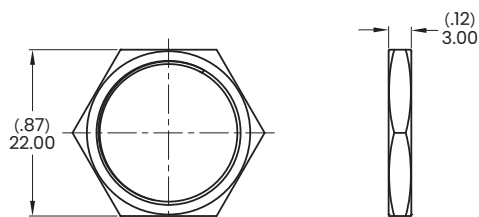
**O-Ring**

Model name. FCP-PY02



**Hex Nut**

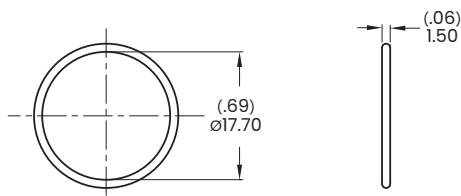
Model name. MNU-MPB01



Available with bushing 22 only

**O-Ring**

Model name. FCP-MPB07



**Hex Nut**

Model name. MNU-MPB02

