



Specifications

Max. Current/Voltage Rating with Resistive Load:
400 mA 32 VAC - 200 mA 50 VDC - 125 mA 125 VAC.
Initial Contact Resistance : 50 mΩ max. (without wire leads)
Note: When the switches with the wire assembly, we only test the electric conduction and will not test the contact resistance on the wire.
Insulation Resistance : 1 GΩ min. at 500 VDC.
Dielectric Strength : 1,500 VAC rms. (initial value).
Electrical Life at Full Load : 500,000 cycles.
Mechanical Life:1,000,000 cycles.
Operating Temperature: -30°C to 85°C.
Total Travel : 1.5 mm (.059 inch).
Operating Force : 3 N ~ 6 N.
Contact Bounce : 10 ms.
Torque : 0.5 Nm max.

Ingress Protection: IP68 (In house test)



Materials

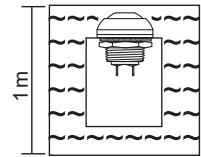
Cap: Polyamide 6/6.
Plunger: PFS6 model: PC. / PFS7 model: Polyamide 6/6.
Rubber: Silicone.
Bushing: Polyamide 6/6.
Case: Diallyl phthalate (DAP) (UL 94 V-0).
Terminal: Copper or brass, gold over silver plated.
Contact: Brass, gold over silver plated.
Wire: Standard wire UL 3385 - 20 AWG.

Soldering Process

Manual Soldering: Use 30 watts soldering iron and controlled the temperature at 350°. Duration of solder immersion: Max. 5 sec.
Wave Soldering: Recommend soldering temperature: 260 ± 5°C
※ Ambient temperature of the PC board solder surface 110°C max. Duration of solder immersion: Max. 5 sec. (PCB thickness is 1.6 mm)

IP 68 for the whole series:

Protected against the effects of immersion up to 1 m water (60 min)



HOW TO ORDER

Note: Specifications and availability subject to change without notice.



Model No. Bushing CAP Terminal Contact Plating Seal RoHS Soldering Additional Hardware LED Color Wire

SP
PFS6 OFF-(ON)
PFS7 ON-(OFF) *
*Only without LED type

B2 Threaded bushing

A Sealed (Std.)
C Gold over silver

M1 3.50 mm, Solder lug (Std.)
M2 5.50 mm, Solder lug **
M3 8.20 mm, Solder lug **
M4 3.50 mm, PC thru-hole **

0 □ M Flat, Matte
A □ S Round, Bright, no LED
G □ S High, Bright, no LED

05 Standard hardware
S RoHS & Lead Free

Item No.	Color
Single Color LED	
L00	Without LED
L01	White
L03	Red
L05	Yellow
L06	Green
L07	Blue
Dual Color LED	
L36	Red+Green

Y001 500 mm wire leads 20 AWG
Y002 90 mm wire leads 20 AWG
Y003 100 mm wire leads 20 AWG
D001 Molding 500 mm wire leads 20 AWG are only available for B2 bushing

EXAMPLE:
PFS6B2 □ M1CAS05L00 (Without LED)
PFS6B2 □ M1CAS05 □ (With LED)

Cap type
LED color
Flat cap color

CAP Color	Item No.		
	Flat (Std.)	Round	High
White	01M	A1S	G1S
Black (Std.)	02M	A2S	G2S
Red (Std.)	03M	A3S	G3S
Yellow	05M	A5S	G5S
Green	06M	A6S	G6S
Blue	07M	A7S	G7S

Note: Our standard is with flat cap.
1. LED is only available with flat cap.
2. Round and high caps are only available with without LED.

** Terminals M2-M4 are only available with PFS6 without LED.
*** Except standard color, for other colors information please consult sales representative.



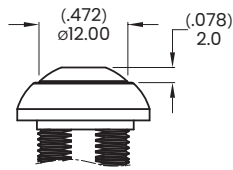
▼ SWITCH FUNCTION

No. Poles	Model No.	Switch Function		Connected Terminals / Schematic	
		POS. 1	POS. 2	POS. 1	POS. 2
SP	PFS6	OFF	(ON)	OPEN	CLOSE
	PFS7	ON	(OFF)	CLOSE	OPEN

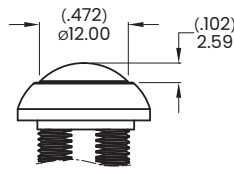
()=Momentary

▼ CAP OPTIONS

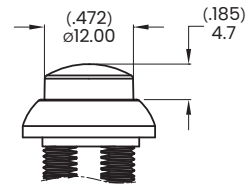
Flat Standard



Round No LED

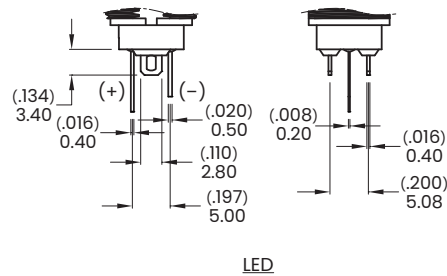
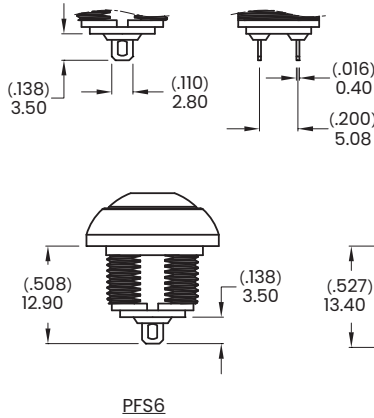


High No LED



▼ TERMINAL OPTIONS

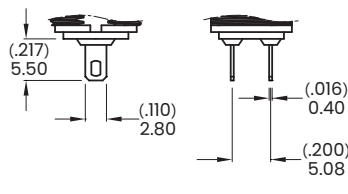
M1 Solder lug (STD)



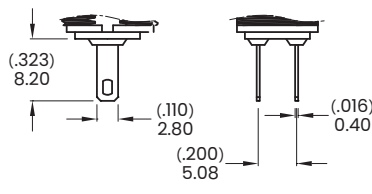
LED

Note: Not available with LED

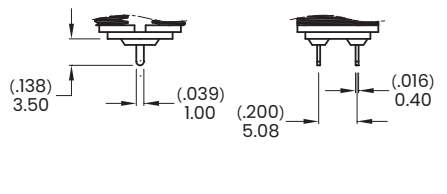
M2 Solder lug



M3 Solder lug

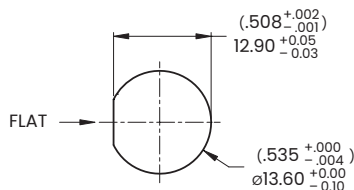


M4 PC Thru-hole



Note: Terminal M2-M4 are only available with PFS6 without LED.

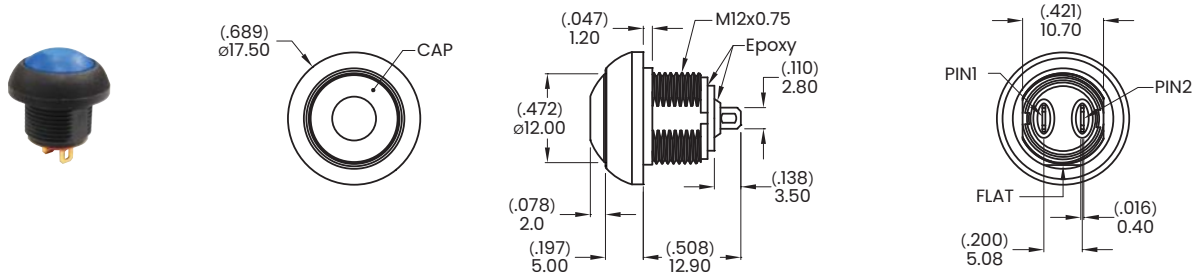
▼ PANEL MOUNTING



Panel thickness:
1.5 mm (.059 inch) min. ~4 mm (.157 inch) max.

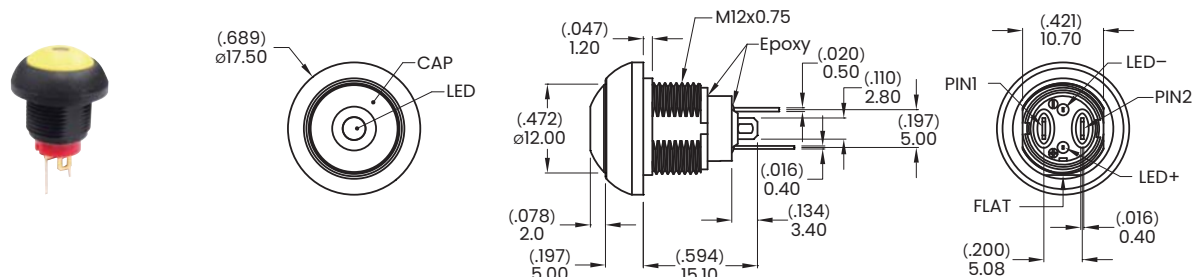


▼ DIMENSION



SPST

Model name. PFS6B207MMICAS05L00



Note: LED is only available with flat cap

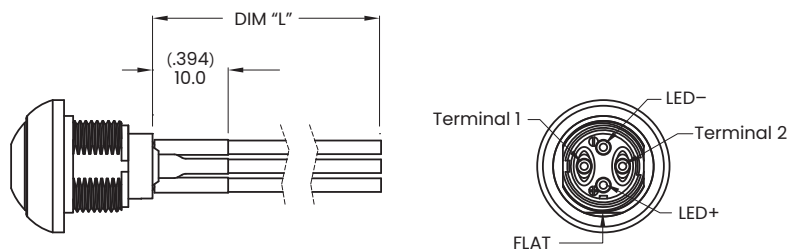
SPST

Model name. PFS6B205MICAS05L01

▼ WIRE OPTIONS

Note: Please consult sales for additional wire options.

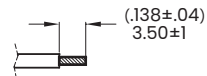
YXXX Wire leads, 20 AWG



EXAMPLE: -
Model name.

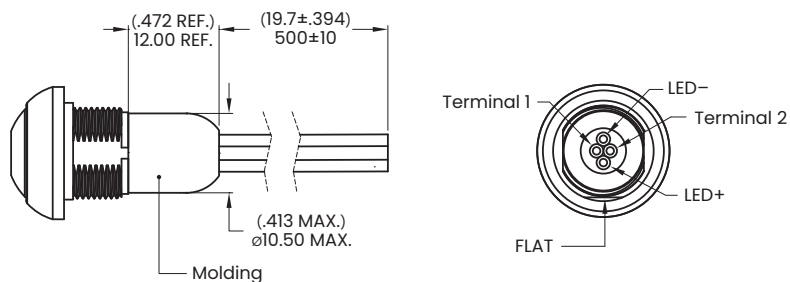
Wire code

Code	DIM "L"
Y001	500±10 (19.7±.394)
Y002*	90±5 (3.54±.197)
Y003	100±5 (3.94±.197)
D001	500±10 (19.7±.394)



* Stripping wire for code Y002.

D001 Molding, 500 mm wire leads, 20 AWG



Wires:

Black wires - Terminals

Red wire - LED (+)

Green wire - LED (-)

Note: No LED terminals is black wires.



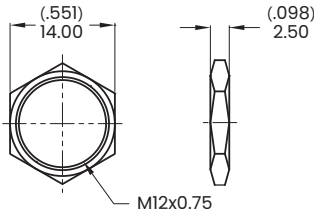
▼ **HARDWARE**

* Standard for threaded bushing : 1 Nut, 1 O-Ring, 1 Lock Washer
* For further information please consult sales representative.

PF
Pushbutton Switches

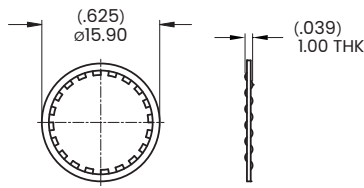
Hex Nut

Model name. MNU-PA03



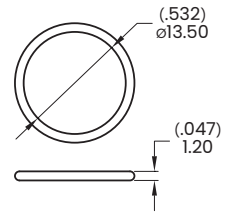
Lock Washer

Model name. MNU-1M09



O-Ring

Model name. FCP-A253

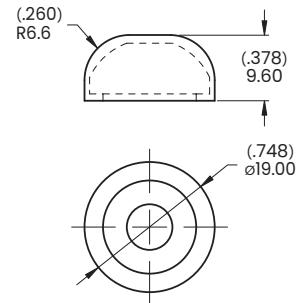


▼ **RUBBER HOOD**

Model name.

FCP-P003 (Transparent)

FCP-P003-2 (Black)MOQ: 10K



Note: Standard is with flat cap.

EXAMPLE:

PFS6B202MMICAS07L00

└─ Standard hardware+FCP-P003 (Transparent rubber hood)