

Specifications

Max. Current/Voltage Rating with Resistive Load:
 100 mA 24 VDC—life expectancy 200,000 cycles.
 2A 125 VAC—life expectancy 10,000 cycles.
 Initial Contact Resistance: 50 mΩ max. (without wire leads).
 Note: When the switches with the wire assembly, we only test the electric conduction and will not test the contact resistance on the wire.
 Insulation Resistance: 1 GΩ min. at 500 VDC.
 Dielectric Strength: 1,000 VAC rms. (initial value).
 Operating Temperature: -30°C to 85°C.
 Total Travel: 2.5 mm (.098 inch).
 Operating Force: 2 N ~ 5 N.
 Contact Bounce: 10 ms.
 Mechanical Life: 1,000,000 cycles.
 Torque: 0.5 Nm max.

Ingress Protection:



Materials

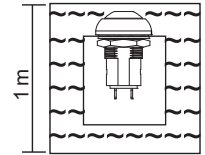
Case: Polyamide 6/6.
 Cap: Polyamide 6/6.
 Bushing: Polyamide 6/6.
 Terminal: Copper, gold over silver plated.
 Contact: Brass, gold over silver plated.
 Wire: Standard wire UL 3385 - 20 AWG.

Soldering Process

Manual Soldering: Use 30 watts soldering iron and controlled the temperature at 350°. Duration of solder immersion: Max. 5 sec.
 Wave Soldering: Recommend soldering temperature: 260 ± 5°C. Duration of solder immersion: Max. 5 sec. (PCB thickness is 1.6 mm (0.63 inch))

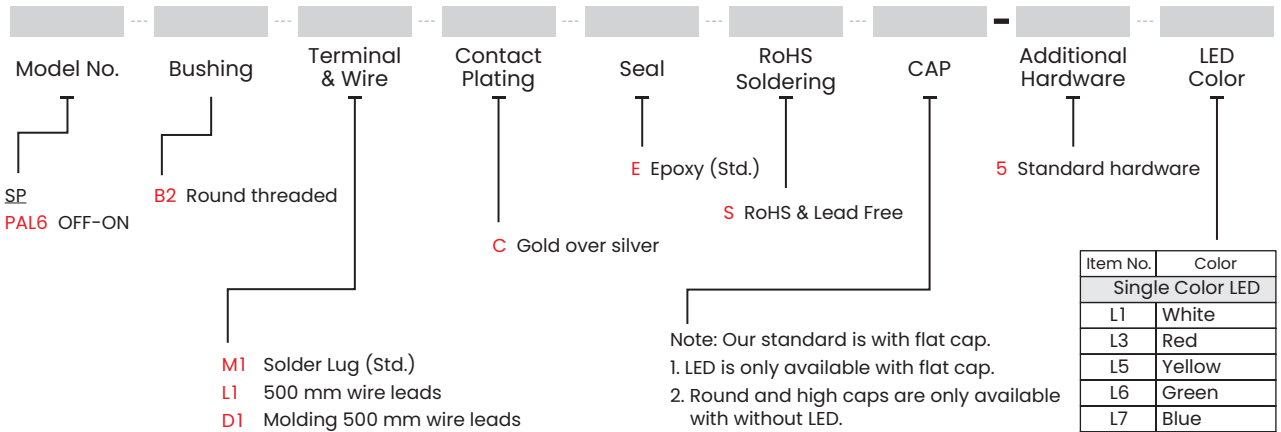
IP67 for the whole series:

Protected against the effects of immersion up to 1 m water (30 min)



HOW TO ORDER

Note: Specifications and availability subject to change without notice.



Note: Our standard is with flat cap.
 1. LED is only available with flat cap.
 2. Round and high caps are only available with without LED.

Item No.	Color
Single Color LED	
L1	White
L3	Red
L5	Yellow
L6	Green
L7	Blue
Dual Color LED	
L36	Red+Green

CAP Color	Item No.		
	Flat (Std.)	Round	High
White	1	A1	G1
Black (Std.)	2	A2	G2
Red (Std.)	3	A3	G3
Orange	4	A4	G4
Yellow	5	A5	G5
Green	6	A6	G6
Blue	7	A7	G7

EXAMPLE:

PAL6B2MICES -5 (Without LED)
 Cap type

PAL6B2MICES -5 (With LED)
 LED color
 Flat cap color

* Except standard color, for other colors information please consult sales representative.

▼ SWITCH FUNCTION

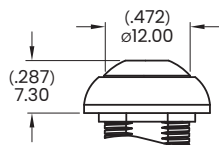
No. Poles	MODEL NO.	Switch Function		Connected Terminals		Schematic
		POS. 1	POS. 2	POS. 1	POS. 2	
		OFF	ON	OPEN	1-3	
SP	PAL6	OFF	ON	OPEN	1-3	

▼ CAP OPTIONS

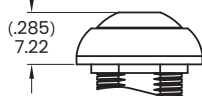
FLAT Standard

ROUND No LED

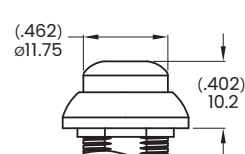
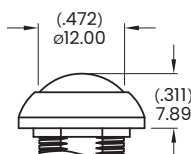
HIGH No LED



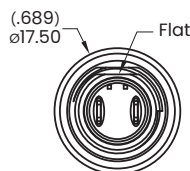
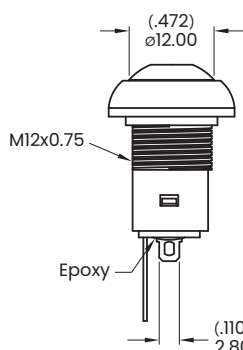
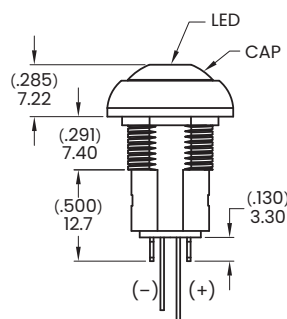
Without LED



With LED

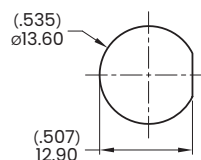


▼ DIMENSION



Bottom View

Panel Mounting



Panel thickness:
1.5 mm (.059 inch) min.
~ 4 mm (.157 inch) max.

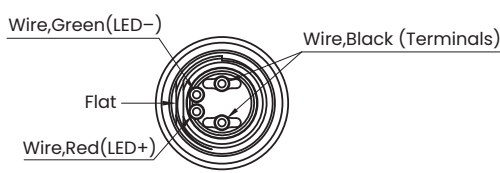
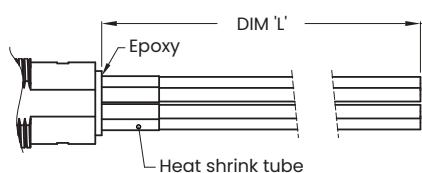
Note: Standard hardware 1 Nut, 1 O-Ring, 1 Lock Washer. See page 137.

▼ WIRE OPTIONS

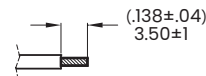
Note: Please consult sales for additional wire options.

Wire leads, 20 AWG

Wire Length:



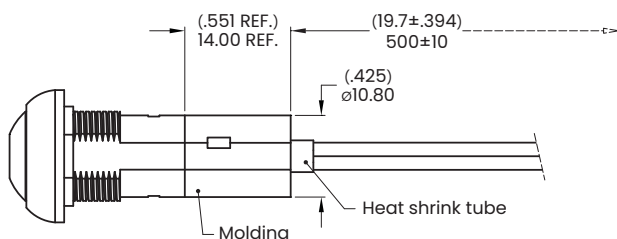
Code	DIM 'L'
L1	500±10 (19.7±.394)
L2 *	90±5 (3.54±.197)
L3	100±5 (3.94±.197)



Note: No LED terminals is black wires

* Stripping wire for code L2

DI Molding, 500 mm wire leads, 20 AWG



Wires:
Black wires - Terminals
Red wire - LED (+)
Green wire - LED (-)

Note: No LED terminals is black wires