



▼ **CIRCUIT**

Single Pole

Without LED

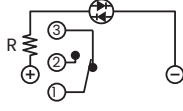


Position 1

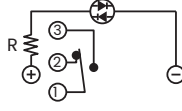


Position 2

Single Color LED

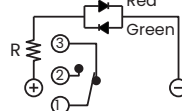


Position 1

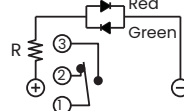


Position 2

Dual Color LED

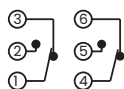


Position 1

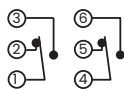


Position 2

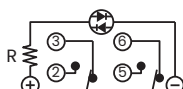
Double Pole



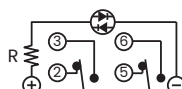
Position 1



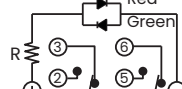
Position 2



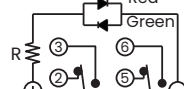
Position 1



Position 2



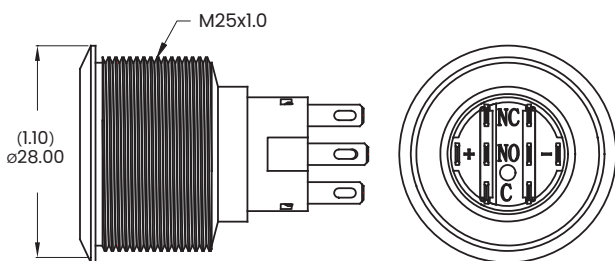
Position 1



Position 2

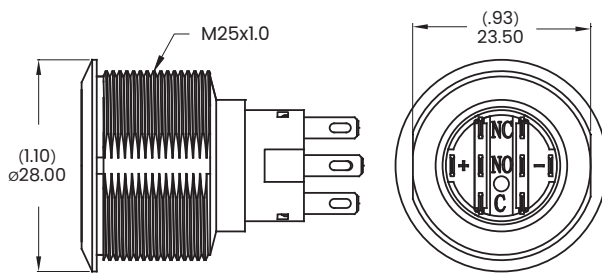
▼ **BODY OPTIONS**

A0 / C3 Round



Note: Not available for light types E1 and E3.

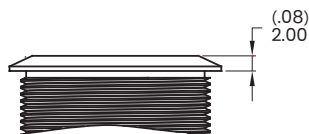
D0 / F3 Double flat



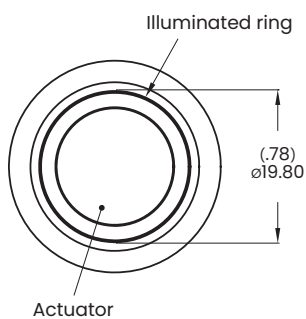
Note: Available with light types E1 and E3 only.

▼ **BUTTON AND LIGHT OPTIONS**

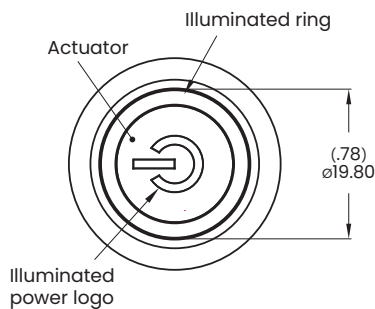
F Flat (Std.)



E / E2 Ring (Moveable)

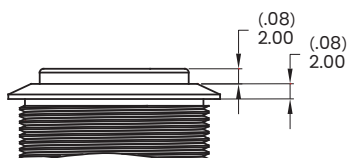


E1 / E3 Ring (Moveable)+Power logo

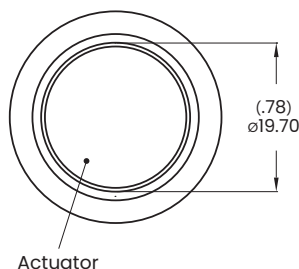


Note: Double flat body is standard.

H High, No LED



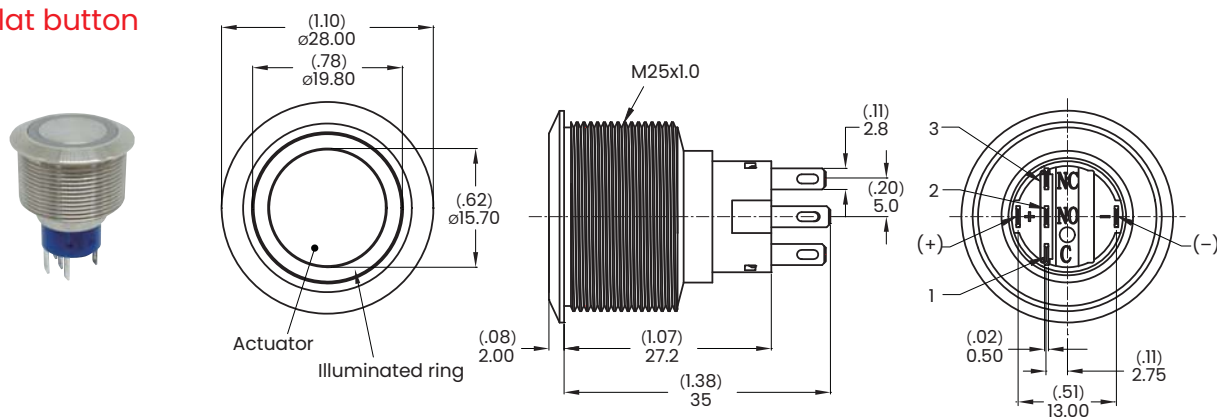
O Without LED



▼ DIMENSION

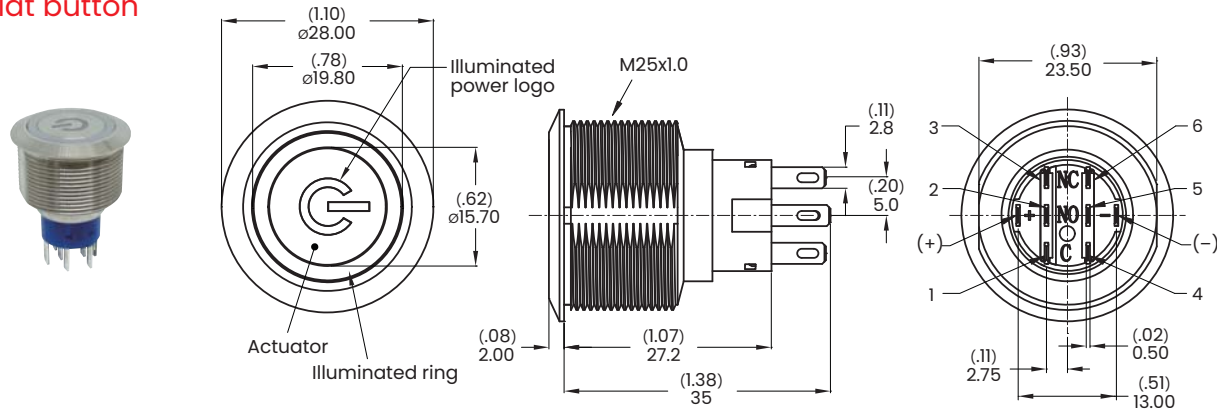
MPB25
Pushbutton Switches

Flat button



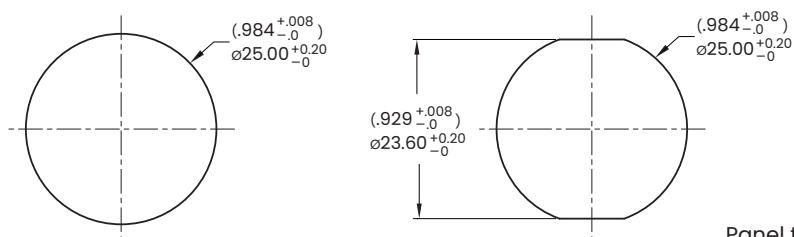
Model name. MPB25-A0F10E-112-JQ

Flat button



Model name. MPB25-D0F20E1-112-JQ

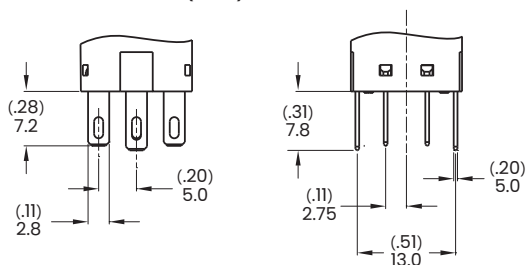
▼ PANEL MOUNTING



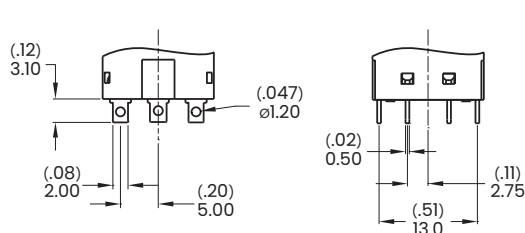
Panel thickness: 10.0 mm (.394 inch) MAX.

▼ TERMINAL OPTIONS

J Solder terminal (Std.)



S Short solder terminal

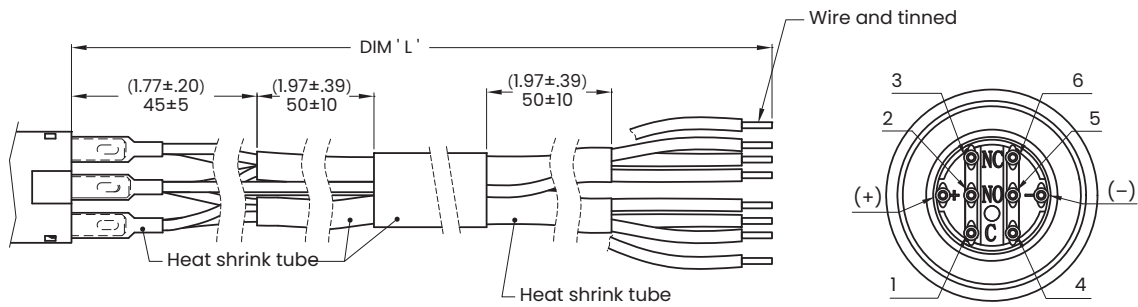




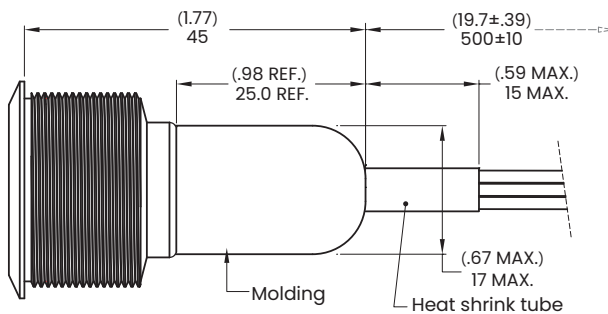
▼ **WIRE OPTIONS**

Note: Please consult sales for additional wire options.

TX Flying wire terminal wire UL 3385 - 18 AWG



D1 Molding, 500 mm wire leads, 18 AWG



Option code:

| Code | DIM 'L' |
|------|---------|
| T1 | 500 mm |
| T2 | 1000 mm |
| T3 | 1500 mm |
| T4 | 2000 mm |

Wires Color:

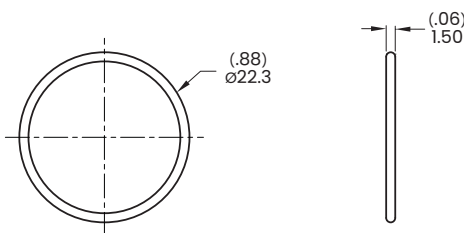
- Yellow wire - Terminals 1 and 4
- Purple wire - Terminals 2 and 5
- Green wire - Terminals 3 and 6
- Red wire - LED (+)
- Black wire - LED (-)

▼ **HARDWARE**

- * Standard hardware : 1 Nut, 1 O-Ring
- * For further information please consult sales representative.

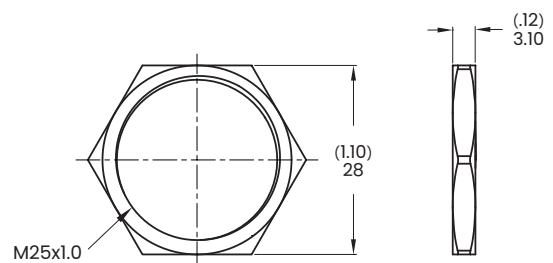
O-Ring

Model name. FCP-MPB25

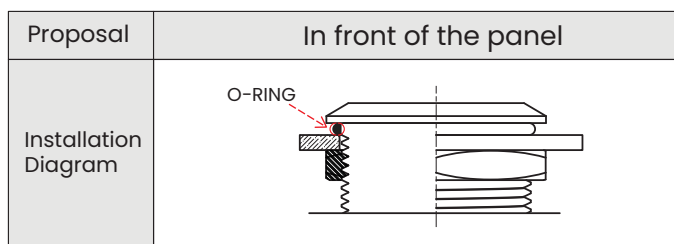


Hex Nut

Model name. MNU-MPB03



▼ **O-RING INSTALLATION**



Note: Only available for metal switches - MPB 19, MPB 22, MPB 25 series, please contact sales representative for full part number.



▼ LASER CARVING OPTIONS

| | | | | | | |
|---|---|---|---|---|---|---|
|  |  |  |  |  |  |  |
| L01 | L02 | L03 | L04 | L05 | L06 | L07 |
|  |  |  |  |  |  |  |
| L08 | L09 | L10 | L11 | L12 | L13 | L14 |
|  |  |  |  |  |  |  |
| L15 | L16 | L17 | L18 | L19 | L20 | L21 |
|  |  |  |  |  |  |  |
| L22 | L23 | L24 | L25 | L26 | L27 | L28 |
|  |  |  |  |  |  |  |
| L29 | L30 | L31 | L32 | L33 | L34 | L35 |
|  |  |  |  |  |  |  |
| L36 | L37 | L38 | L39 | L40 | L41 | L42 |
|  |  |  |  |  |  | |
| L43 | L44 | L45 | L46 | L47 | L48 | |