



Specifications

Rating: 1th 5A / 250 VAC resistive load 3A / 250 VAC.
 Contact Resistance: 50 mΩ max. @ 1A 12 VDC (initial value).
 (without wire leads).
 Note: When the switches with the wire assembly, we only test the electric conduction and will not test the contact resistance on the wire.
 Insulation Resistance: 1,000 MΩ min. at 500 VDC.
 Dielectric Strength: 2,000V RMS @ sea level.
 Operating Temperature: -20°C to 55°C.
 Mechanical Life: Momentary 1,000,000 cycles.
 Self-lock 500,000 cycles.
 Electrical Life: 50,000 make-and-break cycles at full load.
 Torque: 5-14 Nm.
 Operating Pressure: 1 Pole 2.5 ± 1 N / 2 Poles 3.5 ± 1 N.
 Travel: About 3.2 mm.

Ingree Protection:



Materials

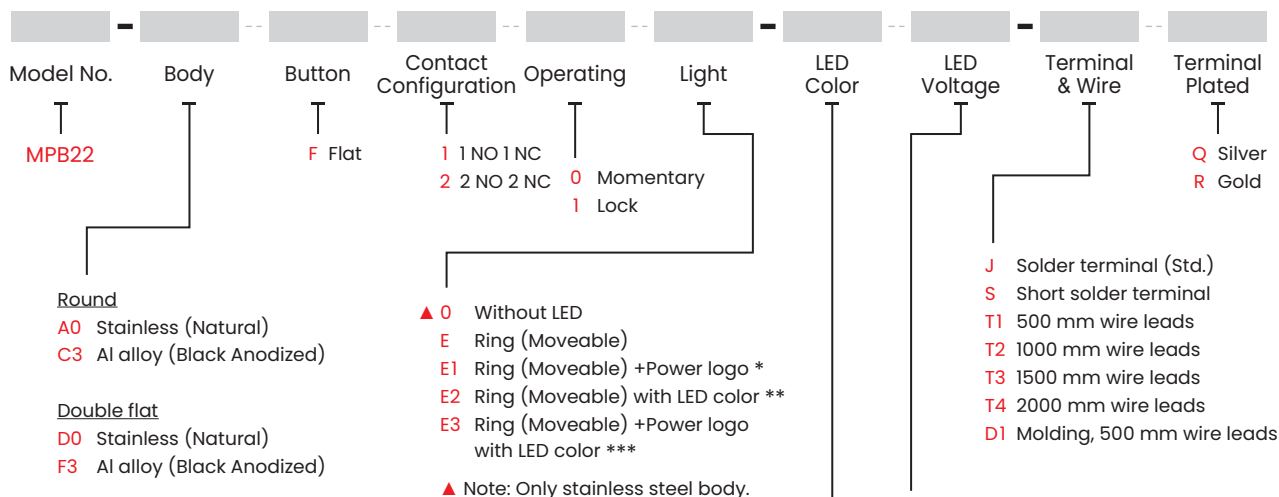
Bushing: Stainless Steel / Aluminum Alloy.
 Base: PBT (UL 94 V-0), PC (UL 94 V-2).
 Actuator: PC (UL 94 V-2); Stainless Steel / Aluminum Alloy.
 Inner Assembly: POM / PA66.
 Spring: Spring steel.
 Sealing: Silicone.
 O-Ring: Silicone.
 Terminal: Brass, gold or silver plated.
 Contact: Brass, coin silver, gold or silver plated.
 Hex Nut: Nickel plated brass.
 Wire: Flying wire terminal wire UL 3385 - 18 AWG as standard.

Soldering Process

Manual Soldering: Use 60 watts soldering iron and controlled the temperature at 290°. Duration of solder immersion: Max. 3 sec.

HOW TO ORDER

Note: Specifications and availability subject to change without notice.

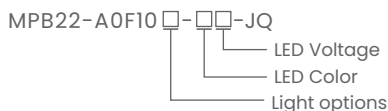


Item No.	Color
0	Without LED
Single Color LED	
1	White
3	Red
4	Orange
5	Yellow
6	Green
7	Blue
Dual Color LED	
A	Red+Green
B	Red+Blue

Item No.	Voltage
0	Without Resistor
3	3V
6	6V
12	12V
24	24V
36	36V
110	110V
220	220V

Note: LED Voltage (20 mA)

EXAMPLE:
MPB22-A0F100-JQ (Without LED)



Note: 1. Bi-color LED is not available with E2 and E3 light type options.
 2. For other LED colors information please consult sales representative.

* Light type E1 is only available with Double flat body type and all LED colors are white ring.
 ** Light type E2 with LED is only available with color red / green / blue and round body type.
 *** Light type E3 with LED is only available with color red / green / blue and Double flat body type.



▼ **CIRCUIT**

Single Pole

Without LED

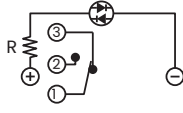


Position 1

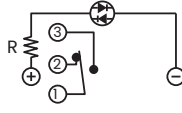


Position 2

Single Color LED

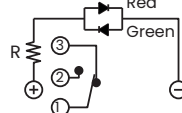


Position 1

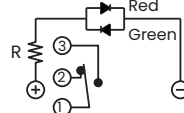


Position 2

Dual Color LED

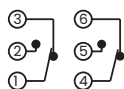


Position 1

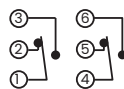


Position 2

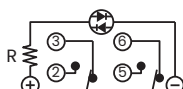
Double Pole



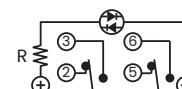
Position 1



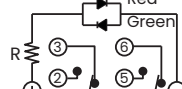
Position 2



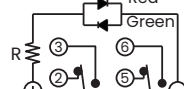
Position 1



Position 2



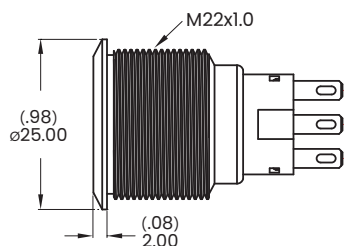
Position 1



Position 2

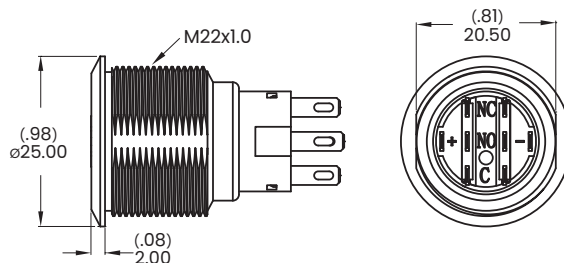
▼ **BODY OPTIONS**

A0 / C3 Round



Note: Not available for light types E1 and E3.

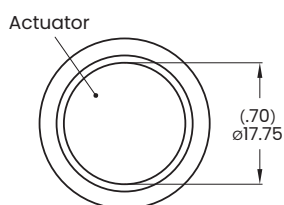
D0 / F3 Double flat



Note: Available with light types E1 and E3 only.

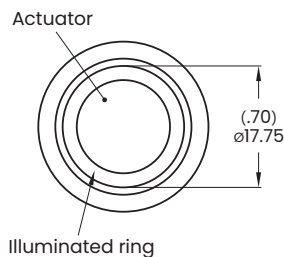
▼ **LIGHT OPTIONS**

0 Without LED

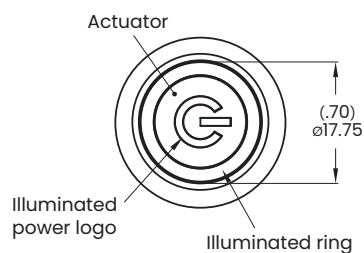


Note: Standard for stainless steel body.

E / E2 Ring (Moveable)



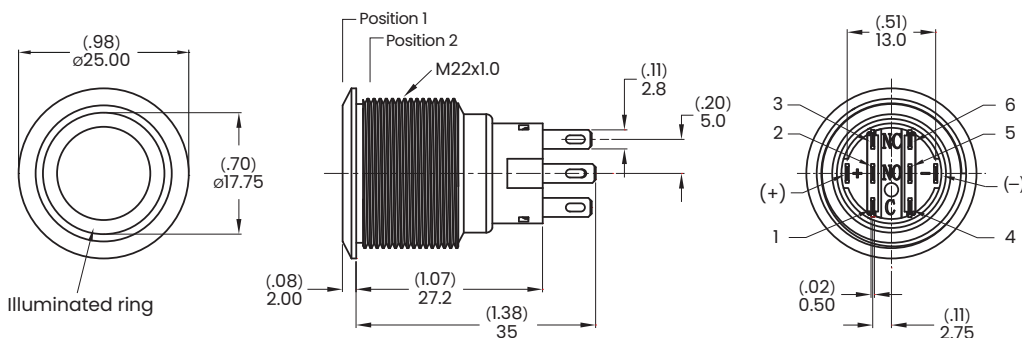
E1 / E3 Ring (Moveable)+Power logo



Note: Double flat body is standard.

▼ **DIMENSION**

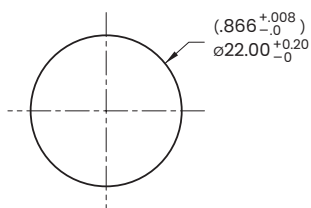
Flat button



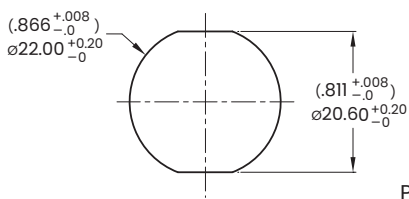
Model name. MPB22-A0F20E-112-JQ



▼ PANEL MOUNTING



Round



Double flat

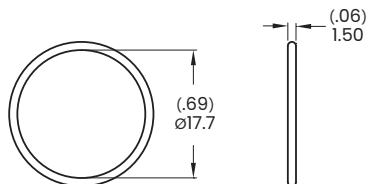
Panel thickness: 10.0 mm (.394 inch) MAX.

▼ HARDWARE

- * Standard hardware : 1 Nut, 1 O-Ring
- * For further information please consult sales representative.

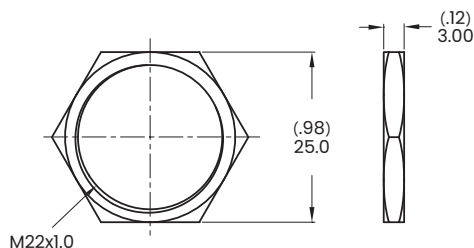
O-Ring

Model name. FCP-MPB07



Hex Nut

Model name. MNU-MPB02



▼ O-RING INSTALLATION

Proposal	In front of the panel
Installation Diagram	