



**Specifications**

Rating: 1th 5A / 250 VAC resistive load 3A / 250 VAC.  
 Contact Resistance: 50 mΩ max. @ 1A 12 VDC (initial value).  
 (without wire leads).  
 Note: When the switches with the wire assembly, we only test the electric conduction and will not test the contact resistance on the wire.  
 Insulation Resistance: 1,000 MΩ min. at 500 VDC.  
 Dielectric Strength: 2,000V RMS @ sea level.  
 Operating Temperature: -20°C to 55°C.  
 Mechanical Life: Momentary 1,000,000 cycles.  
 Self-lock 500,000 cycles.  
 Electrical Life: 50,000 make-and-break cycles at full load.  
 Torque: 5-14 Nm.  
 Operating Pressure: 1 Pole 2.5 ± 1 N / 2 Poles 3.5 ± 1 N.  
 Travel: About 3.2 mm.

**Ingree Protection:**



(Stainless)

**Materials**

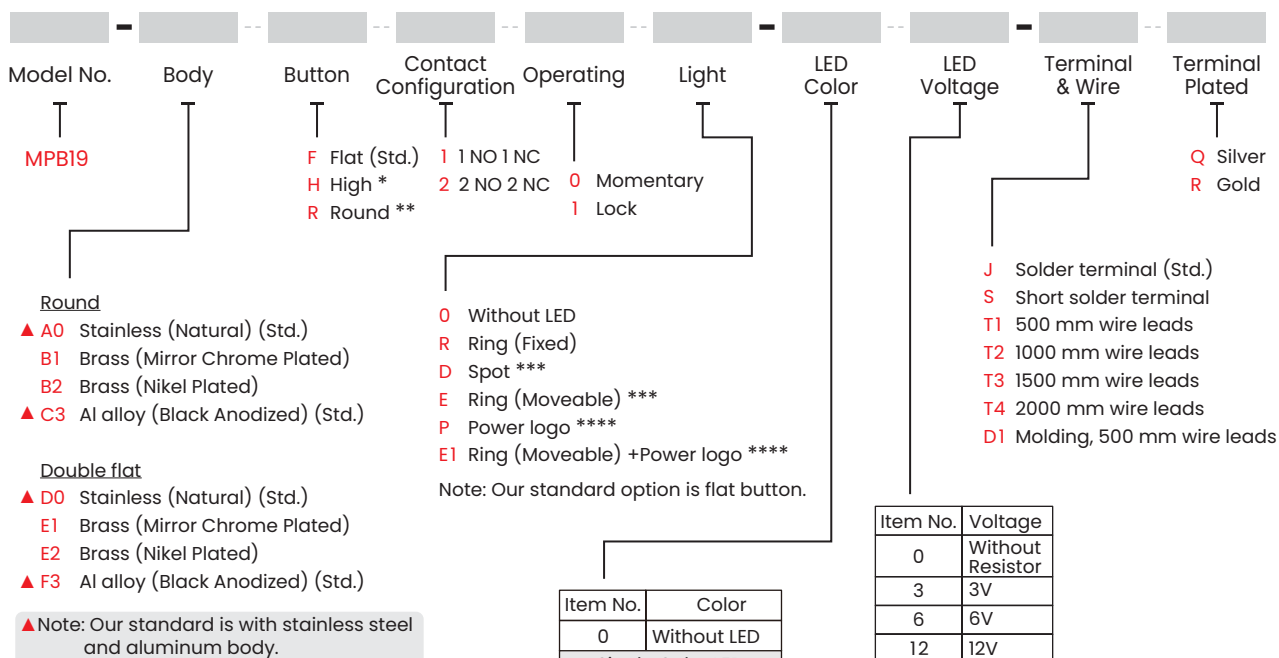
Bushing: Stainless Steel / Brass / Aluminum Alloy.  
 Base: PBT (UL 94 V-0), PC (UL 94 V-2).  
 Actuator: PC (UL 94 V-2); Stainless Steel / Brass / Aluminum Alloy.  
 Inner Assembly: POM / PA66.  
 Spring: Spring steel.  
 Sealing: Silicone.  
 O-Ring: Silicone.  
 Terminal: Brass, gold or silver plated.  
 Contact: Brass, coin silver, gold or silver plated.  
 Hex Nut: Nickel plated brass.  
 Wire: Flying wire terminal wire UL 3385 - 18 AWG as standard.

**Soldering Process**

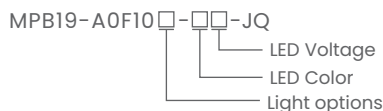
Manual Soldering: Use 60 watts soldering iron and controlled the temperature at 290°. Duration of solder immersion: Max. 3 sec.

**HOW TO ORDER**

Note: Specifications and availability subject to change without notice.



EXAMPLE:  
MPB19-A0F100-JQ (Without LED)



Note: For other LED colors information please consult sales representative.

- \* 1. H-type button are available with high types only R, D and P, stainless steel body as standard.
- 2. Without LED (Type 0), stainless steel and aluminum alloy bodies as standard.
- \*\* Standard is without LED and only available with stainless steel body.
- \*\*\* For button type F only.
- \*\*\*\* Light types P and E1 flat button are standard (Type F) and only available with body types D0 and F3.



▼ **CIRCUIT**

**Single Pole**

Without LED

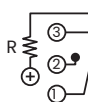


Position 1

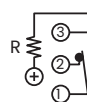


Position 2

Single Color LED

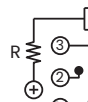


Position 1

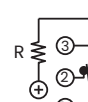


Position 2

Dual Color LED

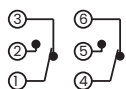


Position 1

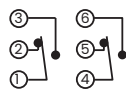


Position 2

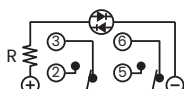
**Double Pole**



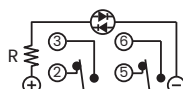
Position 1



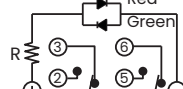
Position 2



Position 1



Position 2



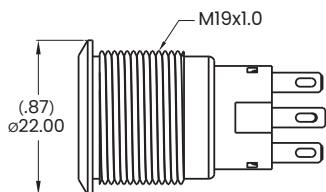
Position 1



Position 2

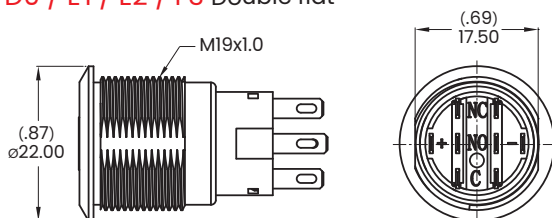
▼ **BODY OPTIONS**

**A0 / B1 / B2 / C3 Round**



Note: Not available for light types P and EI.

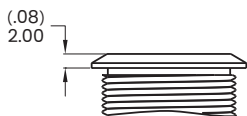
**D0 / E1 / E2 / F3 Double flat**



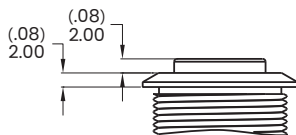
Note: Available with light types P and EI only.

▼ **BUTTON OPTIONS**

**F Flat (Std.)**

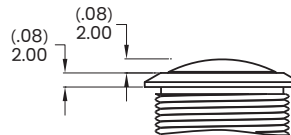


**H High**



Note: Not available for light types E and EI.

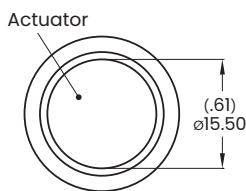
**R Round (No LED)**



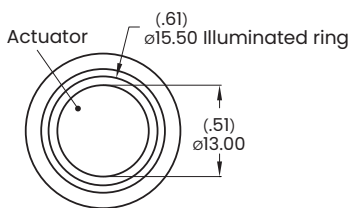
Note: Standard for stainless steel body.

▼ **LIGHT OPTIONS**

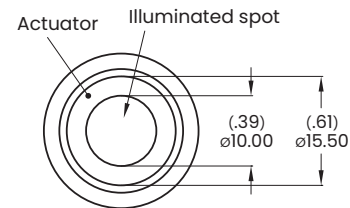
**O Without LED**



**R Ring (Fixed)**

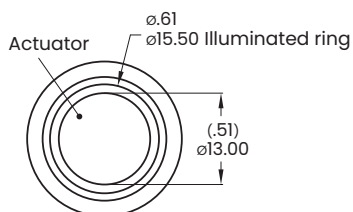


**D Spot**



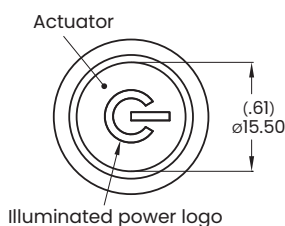
Note: Not available for brass body type.

**E Ring (Moveable)**



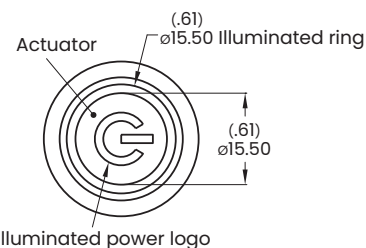
Note: Available with flat button only.

**P Power logo**



Note: Options P and EI are only available for double flat body types.

**EI Ring (Moveable)+Power logo**

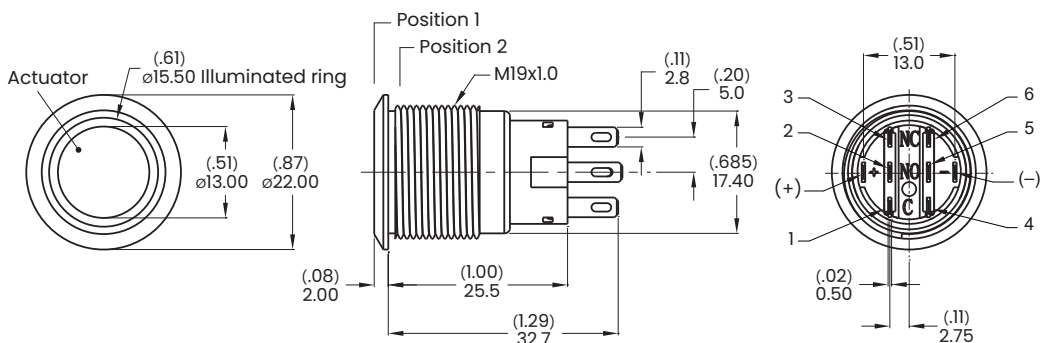




▼ DIMENSION

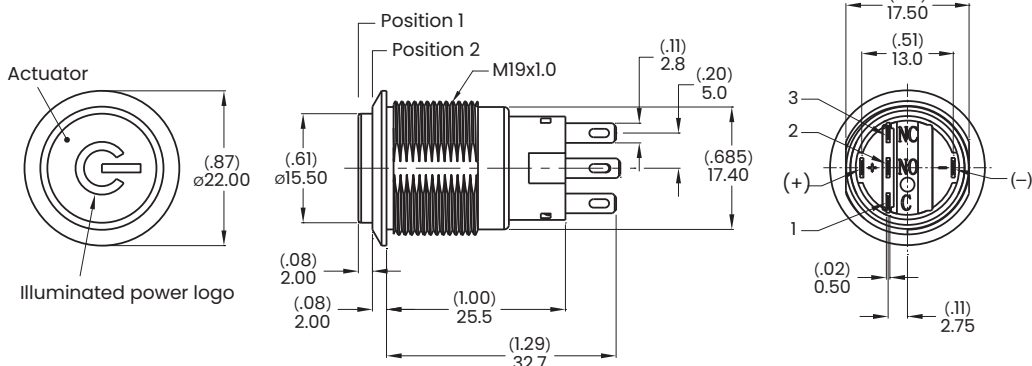
MPB19  
Pushbutton Switches

Flat button



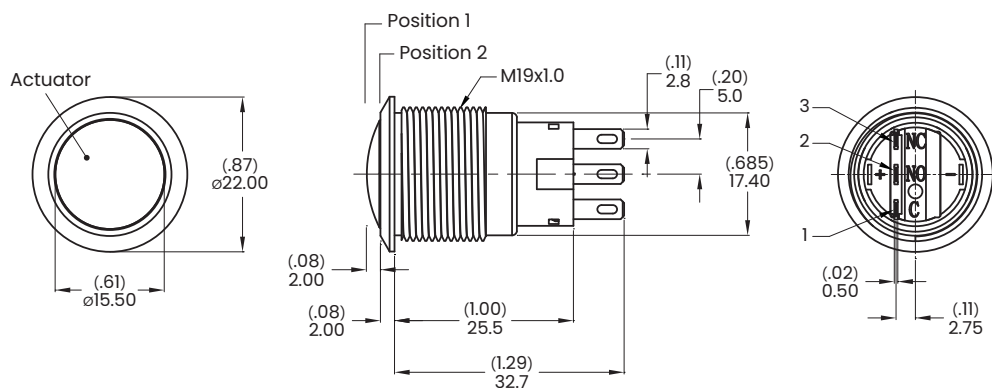
Model name. MPB19-A0F20E-112-JQ

High button



Model name. MPB19-D0H10P-112-JQ

Round button

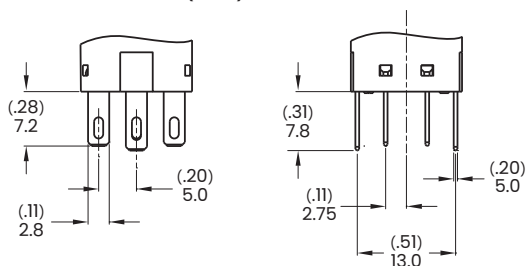


Note: No LED only.

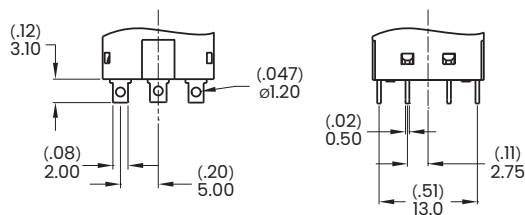
Model name. MPB19-A0R100-JQ

▼ TERMINAL OPTIONS

J Solder terminal (Std.)



S Short solder terminal

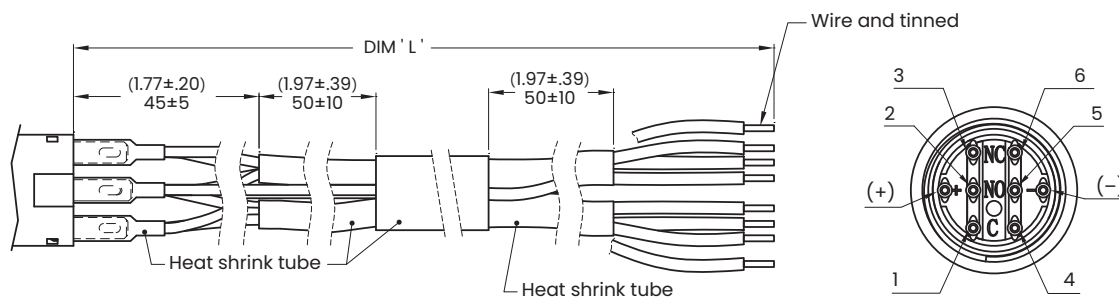




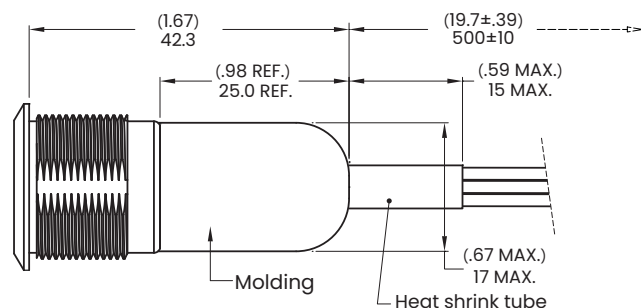
▼ **WIRE OPTIONS**

Note: Please consult sales for additional wire options.

**TX** Flying wire terminal wire UL 3385 - 18 AWG



**D1** Molding, 500 mm wire leads, 18 AWG



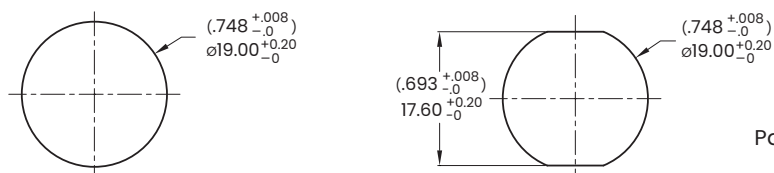
Option code:

Code	DIM 'L'
T1	500 mm
T2	1000 mm
T3	1500 mm
T4	2000 mm

Wires Color:

- Yellow wire - Terminals 1 and 4
- Purple wire - Terminals 2 and 5
- Green wire - Terminals 3 and 6
- Red wire - LED (+)
- Black wire - LED (-)

▼ **PANEL MOUNTING**



Panel thickness: 10.0 mm (.394 inch) MAX.

Round

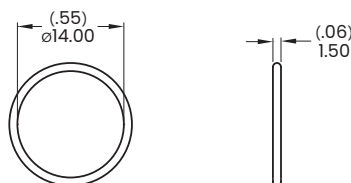
Double flat

▼ **HARDWARE**

- \* Standard hardware : 1 Nut, 1 O-Ring
- \* For further information please consult sales representative.

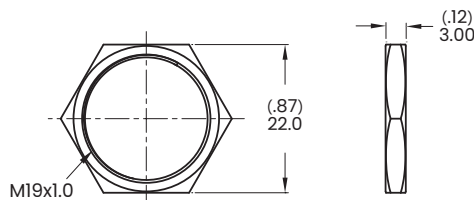
**O-Ring**

Model name. FCP-PY02



**Hex Nut**

Model name. MNU-MPB01



▼ **O-RING INSTALLATION**

