



Specifications

Mechanical Life: 50,000 make-and-break cycles.
 Electrical Life: 6,000 cycles.
 Contact Resistance: 20 mΩ max. (initial value) @ 2-4 VDC 100 mA for both silver and gold plated contacts.
 Insulation Resistance: 1,000 MΩ min. at 1,000 VDC
 Dielectric Strength: 1,000 Vrms min.@sea level (initial value).
 Operating Temperature: -40°C to 85°C.

Ingree Protection:



Contact & Terminal Plating Options:

Contact Plating	Terminal Plating	Ratings
Q Silver	Gold flash over silver	3 Amps with resistant load @ 120 VAC or 28 VDC
C Gold over Silver	Gold over silver	1 Amps with resistant load @ 250 VAC
R Gold	Gold	0.4 Volt - Amps (VA) max. @ 20V max. (AC or DC)

Notes: All models -R_{US} with all options when ordered with Q or C contact material.

Materials

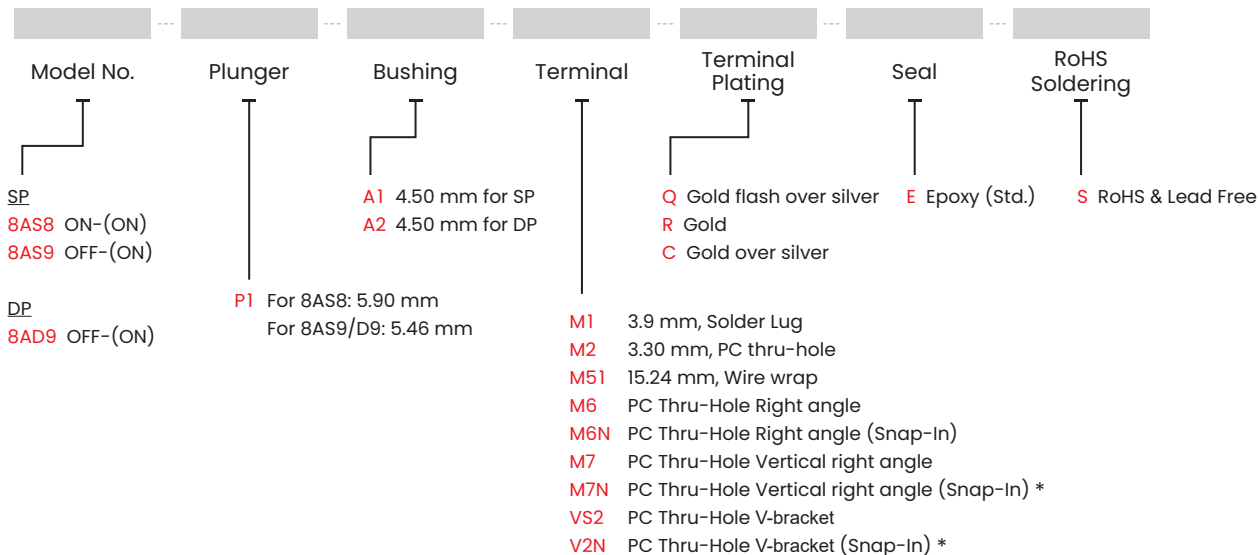
Case and Bushing: Glass filled nylon 6/6, flame retardant, heat stabilized (UL 94 V-0).
 Plunger: Thermoplastic polyester (UL 94 V-0), internal o-ring sealed.
 Switch Support: Brass, tin plated.
 Terminal / Contact: Copper or brass with silver or gold plated.

Soldering Process

Manual Soldering: Use 30 watts soldering iron and controlled the temperature at 350°. Duration of solder immersion: Max. 5 sec.
 Wave Soldering: Recommend soldering temperature: 260 ± 5°C Duration of solder immersion: Max. 5 sec. (PCB thickness is 1.6 mm)

HOW TO ORDER

Note: Specifications and availability subject to change without notice.



EXAMPLE: 8AS8P1A1M2RES

Note: Plunger cap options see page 122.

* Terminals M7N and V2N is not suitable for DP model.

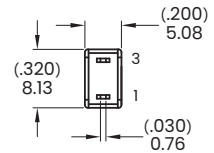
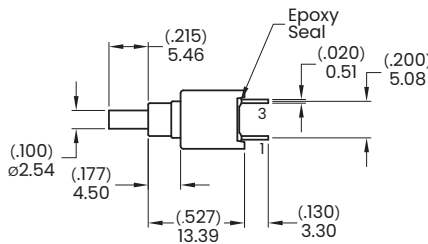
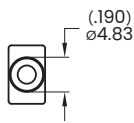


▼ SWITCH FUNCTION

No. Poles	UL/CSA Model No.	Model No.	Switch Function		Connected Terminals / Schematic	
			POS. 1	POS. 2	POS. 1	POS. 2
SP	Q28A18	8AS8	ON	(ON)	2-1 	2-3
	Q28A19	8AS9	OFF	(ON)	OPEN	1-3
DP	Q28A29	8AD9	OFF	(ON)	OPEN	1-3, 4-6

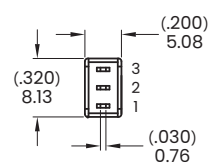
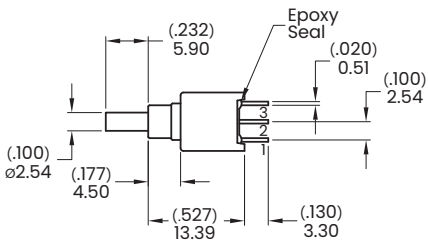
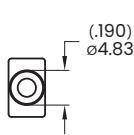
()=Momentary

▼ POLE OPTIONS



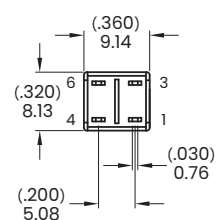
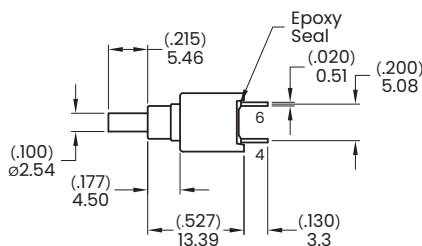
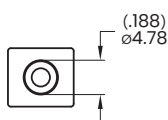
SPST

Model name. 8AS9PIA1M2RES



SPDT

Model name. 8AS8PIA1M2RES



DPST

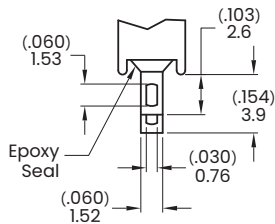
Model name. 8AD9PIA2M2RES



▼ **TERMINAL OPTIONS**

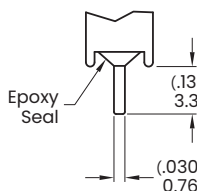
8A
Pushbutton Switches

M1 Solder lug



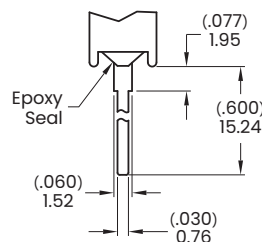
0.51 mm (.020 inch) THK.

M2 PC Thru-hole



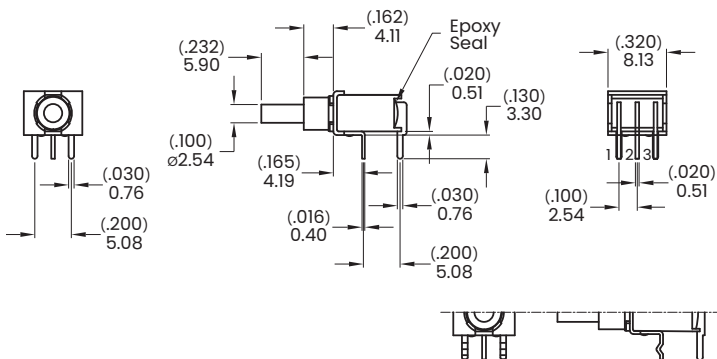
0.51 mm (.020 inch) THK.

M51 Wire Wrap

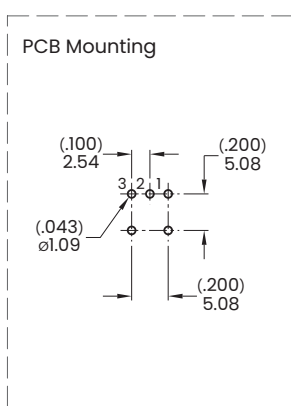


0.51 mm (.020 inch) THK.

M6



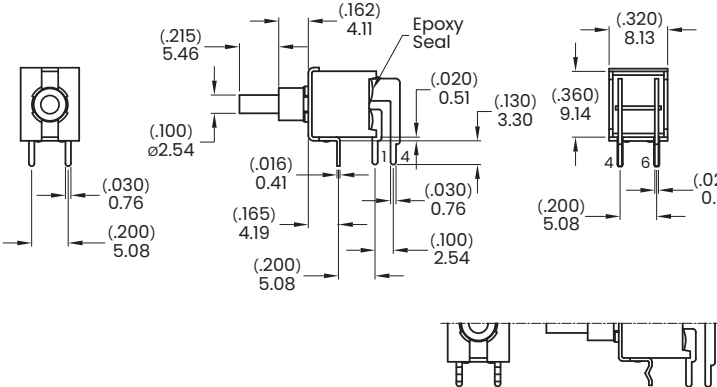
M6N (Snap-In)



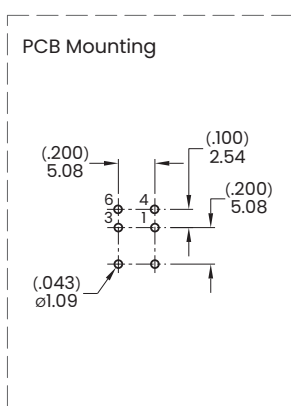
SPDT

Model name. 8AS8P1A1M6RES

M6



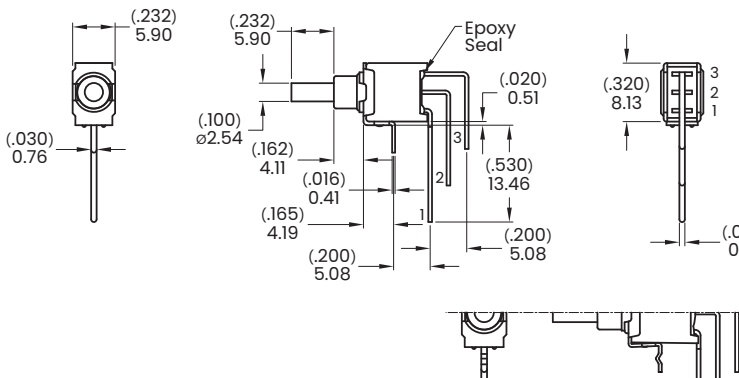
M6N (Snap-In)



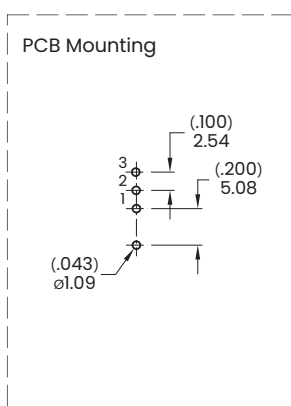
DPST

Model name. 8AD9P1A2M6RES

M7



M7N (Snap-In)

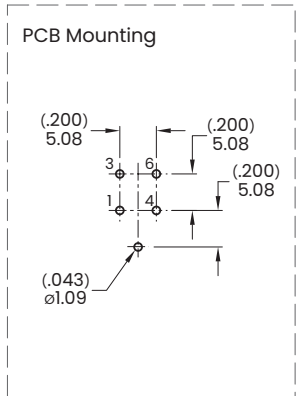
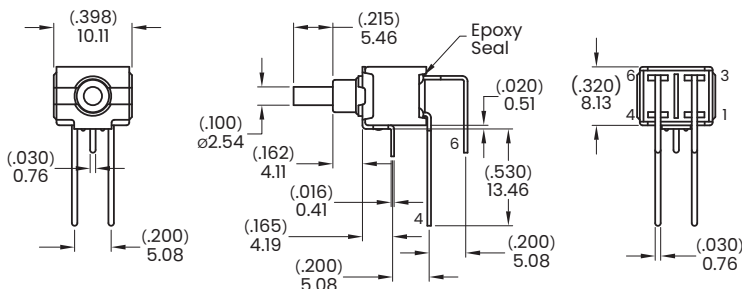


SPDT

Model name. 8AS8P1A1M7RES



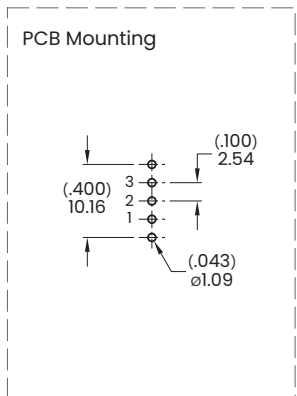
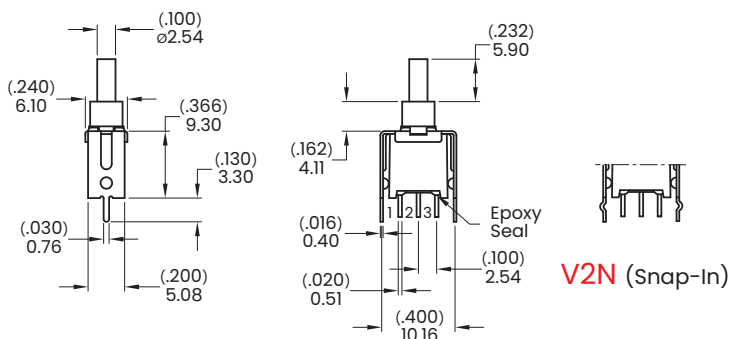
M7



DPST

Model name. 8AD9PIA2M7RES

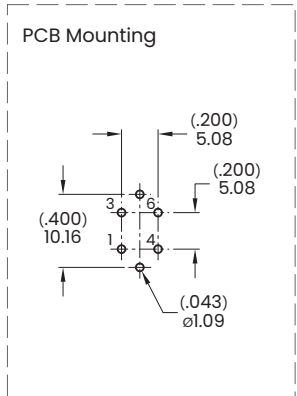
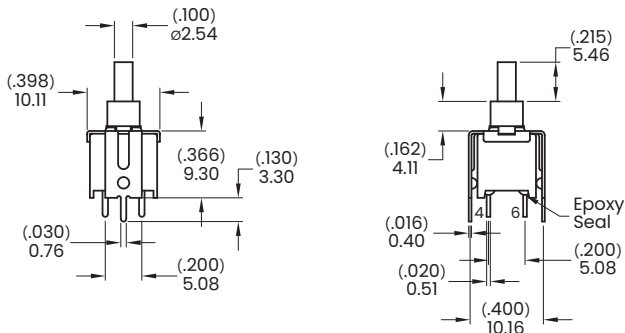
VS2



SPDT

Model name. 8AS8PIA1VS2RES

VS2

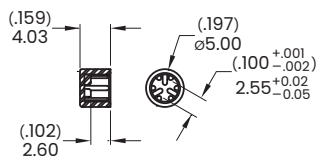


DPST

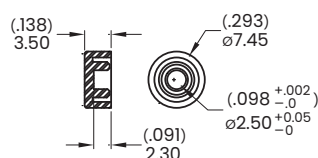
Model name. 8AD9PIA2VS2RES

▼ PLUNGER CAP OPTIONS

C2



C5



Cap Color :

ITEM NO.	COLOR
1	White (Std.)
2	Black (Std.)
3	Red (Std.)
5	Yellow
6	Green (Std.)
7	Blue
9	Gray

EXAMPLE:

